



MONTHLY MEMBERSHIP PROGRESS REPORT

District 27 B2

Results as of: 05/31/2018

GMT: MICHAEL MOLEND A

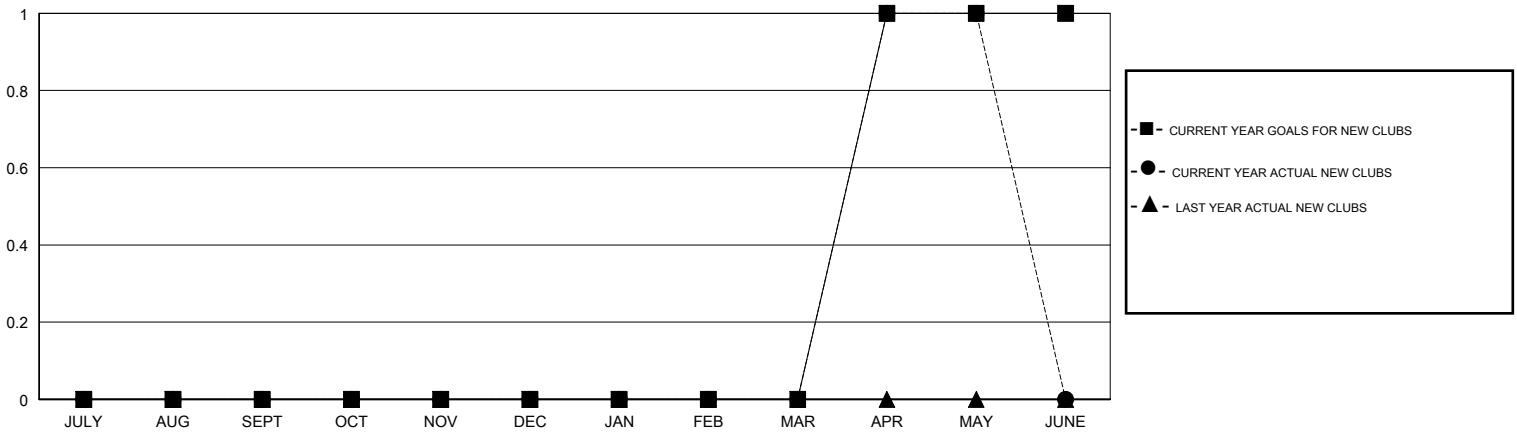
LOCATION WISCONSIN

GMT CA

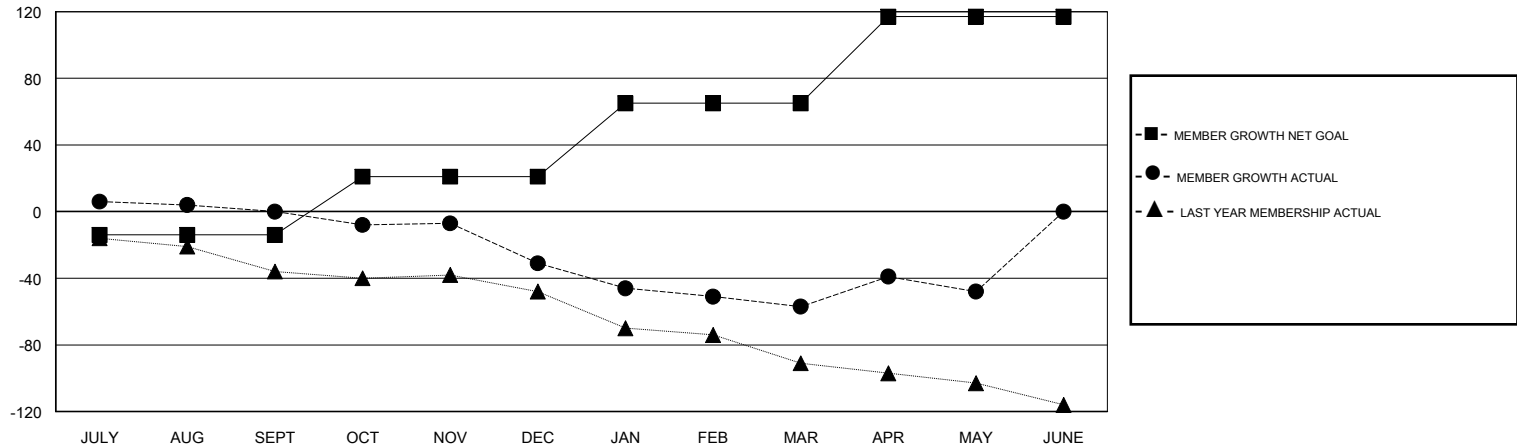
Clubs			
RESULTS FOR 2017-2018			
QUARTER	NEW CLUB GOAL	NEW CLUBS	DROPPED CLUBS
JULY/AUG/SEPT	0	0	0
OCT/NOV/DEC	0	0	1
JAN/FEB/MAR	0	0	0
APR/MAY/JUNE	1	1	1

Members			
RESULTS FOR 2017-2018			
QUARTER	MEMBER GROWTH NET GOAL	MEMBER GROWTH ACTUAL	DROPPED MEMBERS ACTUAL (including transfers)
JULY/AUG/SEPT	-14	46	42
OCT/NOV/DEC	35	29	58
JAN/FEB/MAR	44	33	53
APR/MAY/JUNE	52	52	40

GOALS AND ACTUAL NEW CLUBS CUMULATIVE



GOALS AND ACTUAL MEMBERS CUMULATIVE



DROPPED CLUBS: 2	42 CLUBS OF 71 ADDED 1 OR MORE NEW MEMBERS	<u>GENDER DISTRIBUTION</u> MALE 1,858 (82.25%) FEMALE 401 (17.75%) Women Percentage Fiscal Year Goal: 19%
<u>DROPPED MEMBERS</u> DECEASED 28 CLUB CANCELLED 6 OTHER 159 TOTAL 193	CLICK HERE FOR CUMULATIVE MEMBERSHIP DATA	TOTAL FAMILY UNIT MEMBERS 339 FAMILY MEMBERS PAYING HALF DUES 172